

# GeoLytics

# StreetDVD User Guide

## Contents

<b>1. Introduction</b>	<b>1</b>
<b>2. Installation</b>	<b>2</b>
<b>3. How to Use StreetDVD</b>	<b>3</b>
<b>Step A. Select TIGER Layers</b>	<b>3</b>
<b>Step B. Select Area to be covered by the File</b>	<b>5</b>
<b>Step C. Run</b>	<b>6</b>
<b>Step D. View Results</b>	<b>8</b>
<b>4. Contacting GeoLytics</b>	<b>9</b>

# 1. Introduction

## What data does the StreetDVD have?

StreetDVD includes all layer data from the TIGER/Line<sup>®</sup> files. StreetDVD generates layer data in two formats: ArcView<sup>®</sup> Shape (SHP) files and MapInfo<sup>®</sup> MID/MIF files. The data for several states are written to a single CD-ROM or DVD. You must have the correct CD or DVD in your reader when you are exporting data for that area.

## How the data is organized?

The StreetDVD data is organized on a per-layer and per-county basis. This means that you select the geographic layers and the counties to be included in the output files. By default, each layer-county combination is written as a separate result file using certain naming conventions. You can make the system merge all counties for each layer into a single file.

**Note: To operate the program, the original CD or DVD must be in the same CD-ROM drive from which the program was installed. You must put in the area CD or DVD for the area that you are extracting data.**

---

Copyright 2007 by GeoLytics, Inc. All rights reserved. No part of this publication may be reproduced, stored in a retrieval system, or transmitted, in any form or by any means, electronic, mechanical, photocopying, recording, or otherwise, without the prior written permission of GeoLytics, Inc. StreetDVD and CensusCD are trademarks of GeoLytics, Inc. All other trademarks are the property of their respective holders. StreetDVD software license is a single user version only, and the use of any extracted data or maps is restricted to within your own organization. TIGER/Line<sup>®</sup> is a registered trademark of the U.S. Census Bureau.

You must agree to the End User License Agreement (EULA) for StreetDVD during Setup or the product will not be installed and you will have no right to use the product or resulting data. A copy of this EULA can be found under the Help menu item. You can view a copy of the EULA in advance, before purchasing or opening any GeoLytics product at [www.GeoLytics.com](http://www.GeoLytics.com)

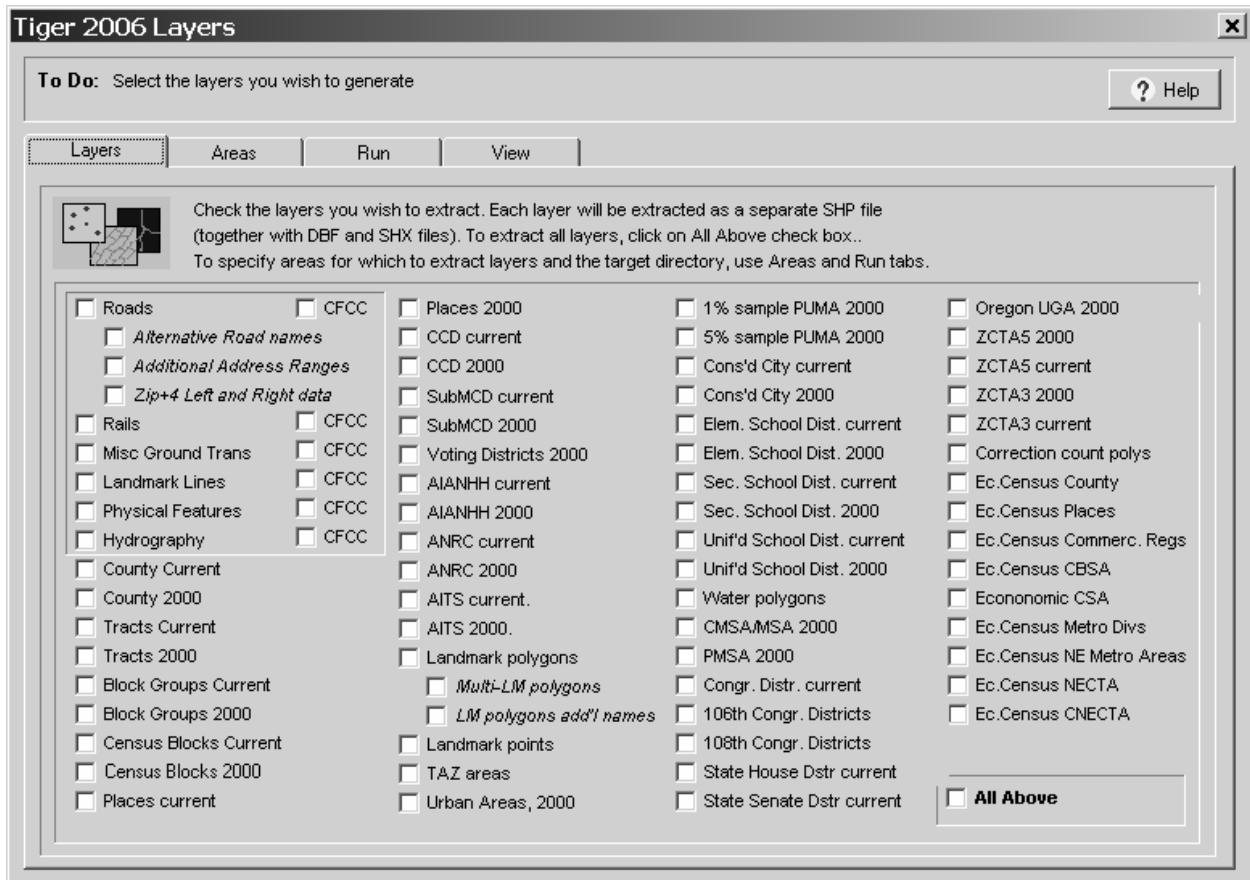
## 2. Installation

- A. Insert any StreetDVD disk into your CD or DVD-ROM drive.
- B. You can install the disk through the Windows Program Manager or “My Computer” icon
  - 1. In the Windows Program Manager, choose “Run” from the “Start” menu
  - 2. Type in D:\setup.exe (assuming D is the letter of your CD or DVD drive), click OK

OR

- 1. Click on the “My Computer” icon and choose the correct drive (often D:\)
  - 2. Click on the “Set Up” icon (it looks like a small blue computer)
- C. Follow the on-screen instructions.  
  
**Note:** if you have previously installed the StreetDVD, you must uninstall it now. The software will prompt you through the uninstall process.
- D. When prompted, enter your name, the name of your organization, and your serial number, which can be found on your invoice.
- E. After the installation is complete, you can start the product at any time by double clicking on the corresponding CensusCD icon or from the Windows “Start” button.

# Step A: Select TIGER Layers



You select geographic layers using the first page of the user interface. To select a layer, click on a layer's checkbox.

StreetDVD includes “base” TIGER<sup>®</sup> layers. They provide boundary information for all major geographic divisions in the U.S. (such as counties or Census blocks), and also for all roads and many other linear and point objects. For linear layers, further distinction can be made based on the object's CFCC code. In other words, StreetDVD can generate all objects for a certain layer or only a subset of objects whose CFCC codes belong to a user-defined list.

## StreetDVD Output Files

StreetDVD generates ArcView files as its output. Each ArcView file consists of a shape file (\*.shp), an index file (\*.shx) and a data file (\*.dbf). If a MapInfo output is requested, StreetDVD still generates an ArcView output and then converts it to MapInfo's import format (\*.mif and \*.mid files).

## **TIGER Layers**

Six TIGER layers represent linear objects:

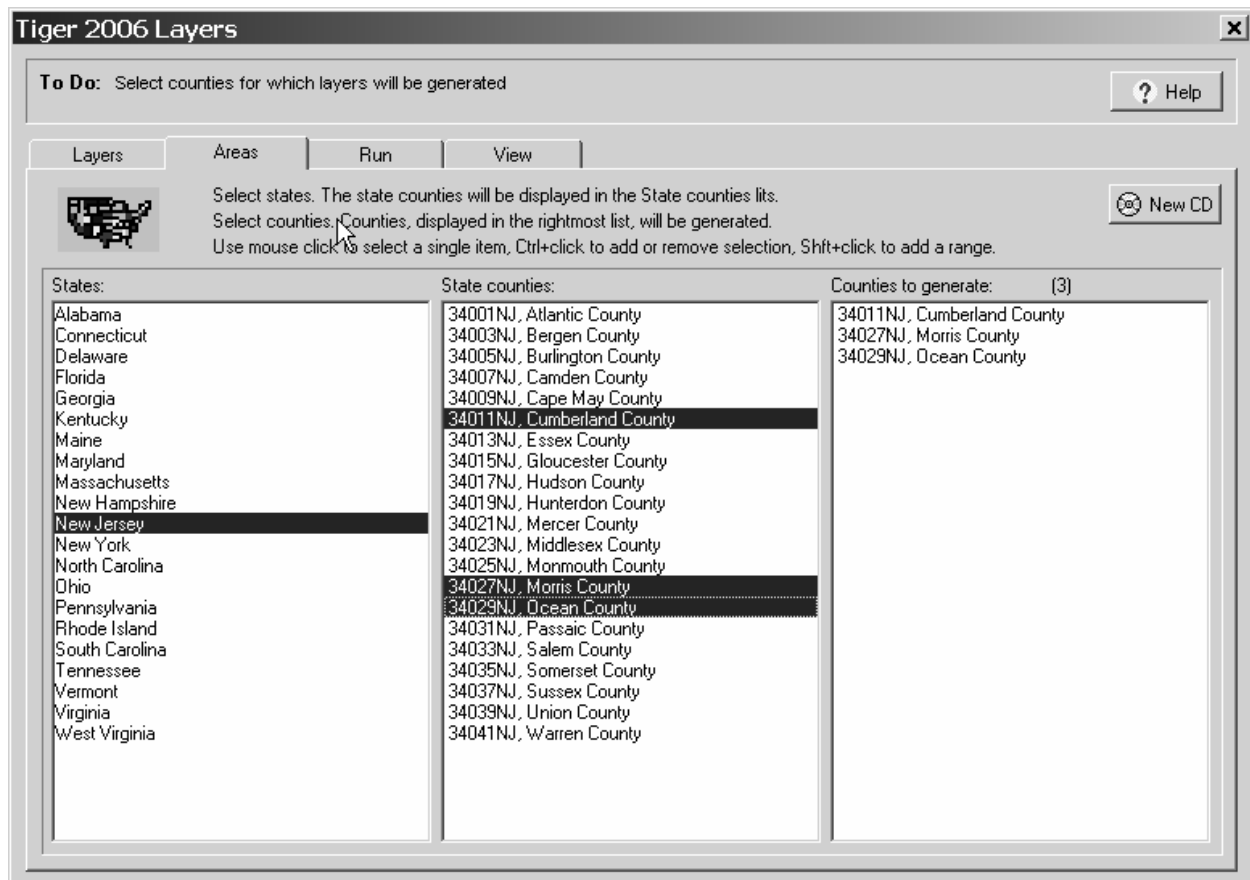
1. Roads (Type A lines)
2. Railroads (Type B lines)
3. Miscellaneous Ground Transport (Type C lines)
4. Landmark Lines (Type D lines)
5. Physical Features (Type E lines)
6. Hydrographic lines (Type H lines)

For these layers, StreetDVD generates ArcView line files, named in the <CountyFIPS>LK<type> format (for example, 34023LKA.SHP and 34023LKA.DBF for NJ Middlesex county roads). The DBF table contains line names (e.g. street names for Type A) and their Census Feature Class codes.

### **CFCC filtering**

For 8 TIGER linear layers you can specify additional selection criteria information based on line's Census Feature Class Codes (CFCC). Click on the CFCC checkbox next to the layer's name and select the CFCC you are interested in from a popup dialog box. Only lines with CFCC you have selected will be included in the output.

## Step B: Select Areas



### State list

When you open StreetDVD you must have one of your regional CDs or DVDs in the drive. The product will open and display a list of the states that are available on that particular CD or DVD

### County list

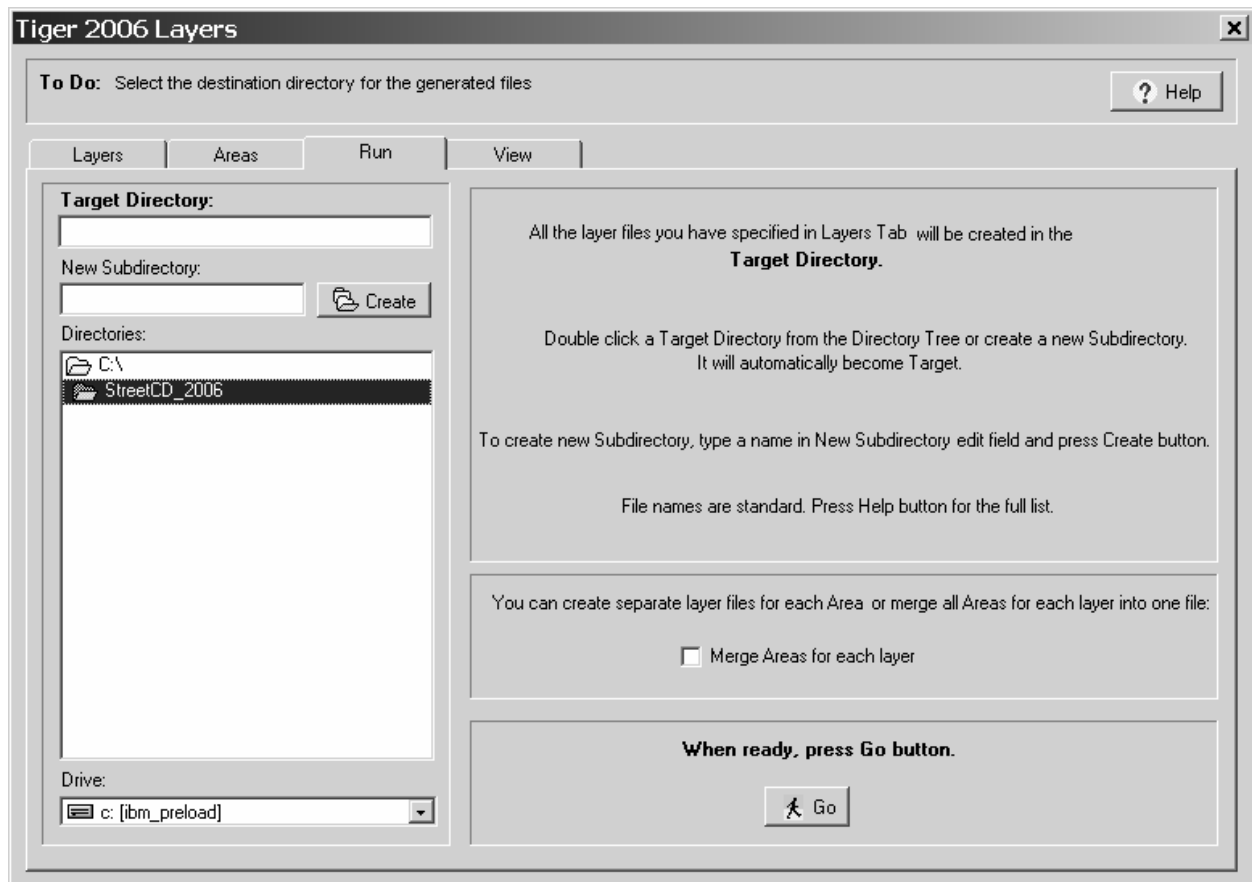
Every time you select a state, its counties are added to the County list. If you de-select a state, its counties are removed from the County list.

### Selected list

Every time you select a county, it is added to the Selected list. Only counties in the Selected list will be included in the output files.

*To select and add multiple states and counties to your list of files to generate, you must hold down the Control key (Ctrl) and right click on each item with your mouse. To select a range of items, hold down the Shift Key and right click on a range of items.*

## Step C: Run



When you are ready to extract your geographic data, click on the tab across the top that says, “Run”. To select the directory that you want your new files to be placed into, Double Click on a Target Directory from the Directory Tree or create a new subdirectory. To create a new subdirectory, type in a name in the box New Subdirectory. It will automatically become the Target Directory and your files will be created and placed in the new subdirectory.

You have the option to merge all the counties that you selected into a single area file. Click on the box “Merge Areas for each layer” and specify an output file. However, each geographic layer will still have its own file.

### Output files

By default, StreetDVD produces a single file for each layer-county combination you have specified on earlier steps. The file name consists of the county’s FIPS code (e.g. 34023) followed by the layer code.

Layer codes are as follows:

- **IkA** for Roads
- **IkB** for Rails
- **IkC** for Misc. Ground Transport
- **IkD** for Landmark Lines
- **IkE** for Physical Features
- **IkH** for Hydrography
- **ctycu** for the County Current
- **cty** for the County 2000
- **trtcu** for the Tracts Current
- **trt** for Tracts 2000
- **grpcu** for the Block Groups Current
- **grp** for Block Groups 2000
- **blkcu** for Blocks Current
- **blk** for Census Blocks 2000
- **plccu** for Places Current
- **plc** for Places 2000
- **cousubcu** for County Census MCD/CDD Current
- **cousub00** for County Census MCD/CDD 2000
- **cdc** for Current Congressional Districts
- **cd106** for the 106<sup>th</sup> Congressional Districts
- **AIANHHC**U Native Lands, Current Year
- **AIANHH00** Native Lands, 2000
- **lpy** for Landmark polygons
- **lpt** for Landmark points
- **taz** for Traffic Analysis Zones
- **urb** for Census Coded Urban Areas
- **unicu** for Unified School Districts, Current
- **uni** for Unified School Districts, 2000
- **wat** for Water polygons
- **msa00** for CMSA/MSA polygons
- **pms00** for PMSA polygons
- **puma1** for PUMA 1%
- **puma5** for PUMA 5%
- **zctz5cu** for ZCTA Current
- **zctz500** for ZCTA 2000
- **alt** for alternative feature names
- **add2** for additional address matching information
- **add** for Key Geographic Location addresses



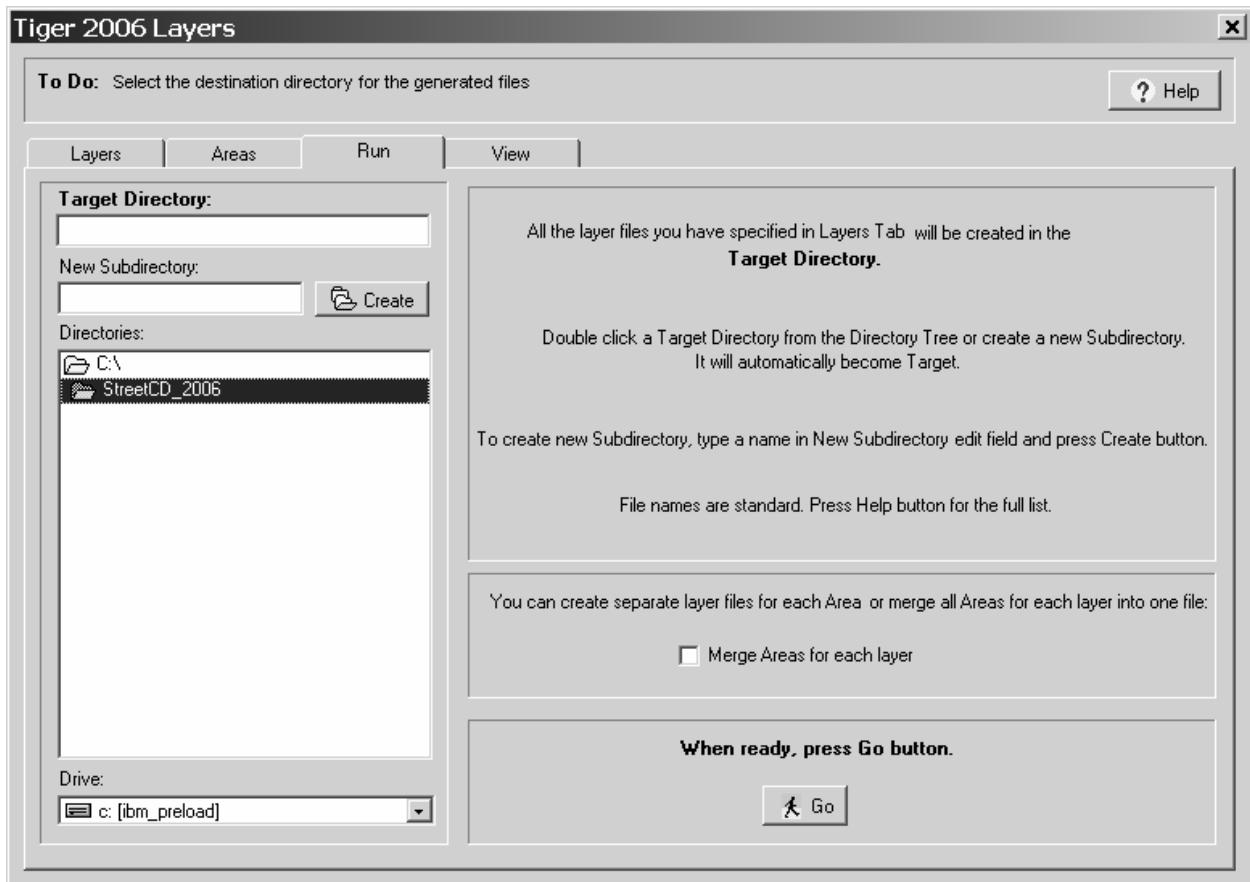
## Progress bar

When you click the Go button, the Run dialog box with a progress bar opens. The progress bar shows what output layer-county combinations are being written. As soon as it reaches 100%, you can click on Close button to view and use your extracted files. Closing the Run dialog box prematurely aborts the current run without deleting already created output files.

## Log

StreetDVD writes a log file for the current run. Each entry corresponds to a layer-county output combination. The file provides a useful link between your selections and output files.

## Step D: View Results



Select the GIS system that will be using the exported files. Select the files you want to view that you have already created listed under “Files”. Hit “Go” and a map viewer will open with your geographic data displayed. You can consult the Log to select SHP files with the layer that you are interested in. If you have chosen ArcView or MapInfo GIS, you can press the Ctrl key and click the mouse to select more than one file.

### **Using built-in Map Viewer**

StreetDVD provides a built-in Map Viewer that allows you to view a single SHP file. See the help section on the Map Viewer itself for additional details using the map viewer.

### **Using ArcView**

If you have ArcView, you can use it to view the output files directly from StreetDVD. As soon as you click Go button, the StreetDVD looks for an active ArcView application, starts it if necessary, and makes it display all selected files in a default View.

### **Using MapInfo**

If you have MapInfo, you can view files in this GIS. As soon as you click Go button, the StreetDVD converts all selected files to the MID/MIF format, starts a new copy of MapInfo, and makes the MapInfo application import and display the files.

### **Generating MapInfo files**

Use this option if you need only to convert selected SHP files to MapInfo's MID/MIF format. The MID/MIF files are generated in the same directory as SHP files.

## **4. Contacting GeoLytics, Inc.**

GeoLytics makes itself accessible to the customer in various ways, with each medium playing a specific role. Our support e-mail address caters to those who have technical questions about the product or are seeking information about the data or how to use the product.

For more information on our support policies, please visit [www.geolytics.com/support/supportpolicies.html](http://www.geolytics.com/support/supportpolicies.html).

<b>Web Site:</b>	<b><a href="http://www.Geolytics.com">http://www.Geolytics.com</a></b>
<b>E-Mail:</b>	<b><a href="mailto:support@Geolytics.com">support@Geolytics.com</a></b>
<b>Customer Service/Support</b>	<b>1-732-651-2000</b>
<b>Fax:</b>	<b>1-732-651-2721</b>
<b>Mail:</b>	<b>GeoLytics, Inc. PO Box 10 East Brunswick, NJ 08816</b>
<b>Tech Support:</b>	<b><a href="mailto:support@GeoLytics.com">support@GeoLytics.com</a></b>